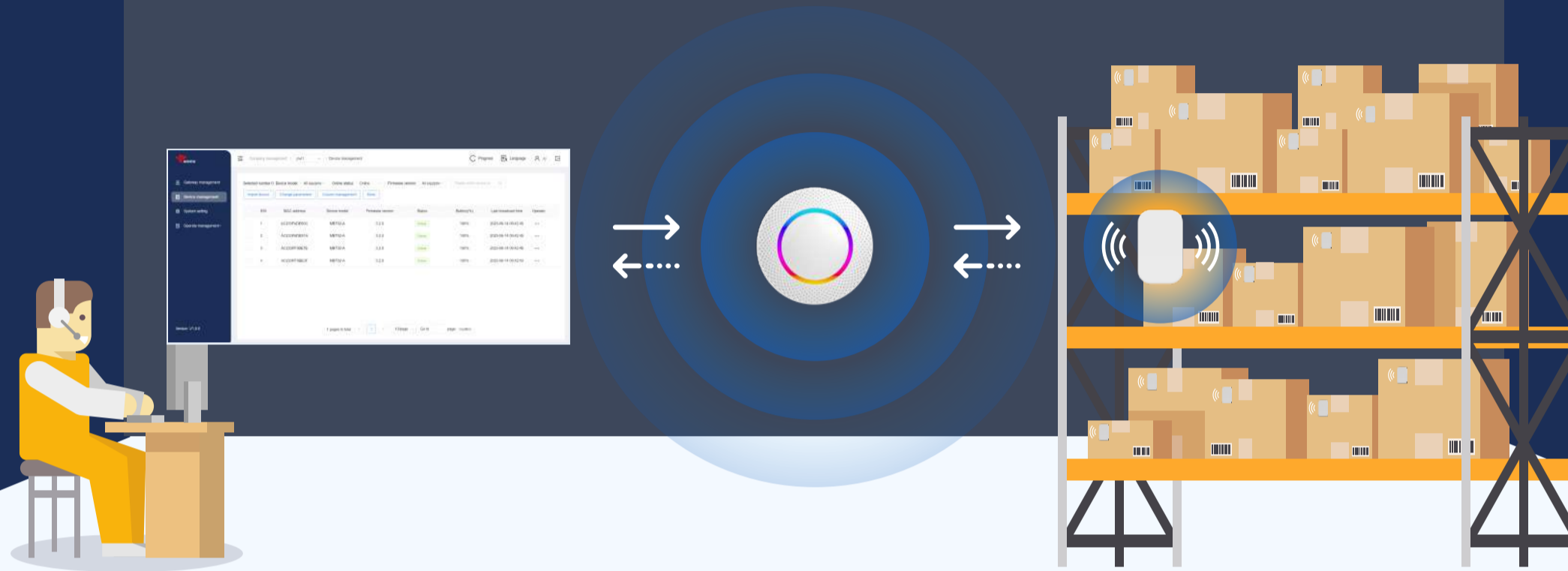




# Connectable Tag Manager Kit

Manage your assets in real time and in batches.

Connectable Tag Manager Kit is an all-inclusive solution designed to revolutionize asset tracking and management. This comprehensive kit combines the cutting-edge MBT02 Connectable Asset Tag and the G1 IoT Gateway (Connection Ver.) which seamlessly work with the MineW Control Platform. With advanced data collection and enterprise-level encryption, businesses gain unparalleled control, real-time insights, and enhanced operational efficiency for a wide range of industries.



## FEATURES ▶



Real-time asset management



Batch operation



Bidirectional communication



Remote configuration and control

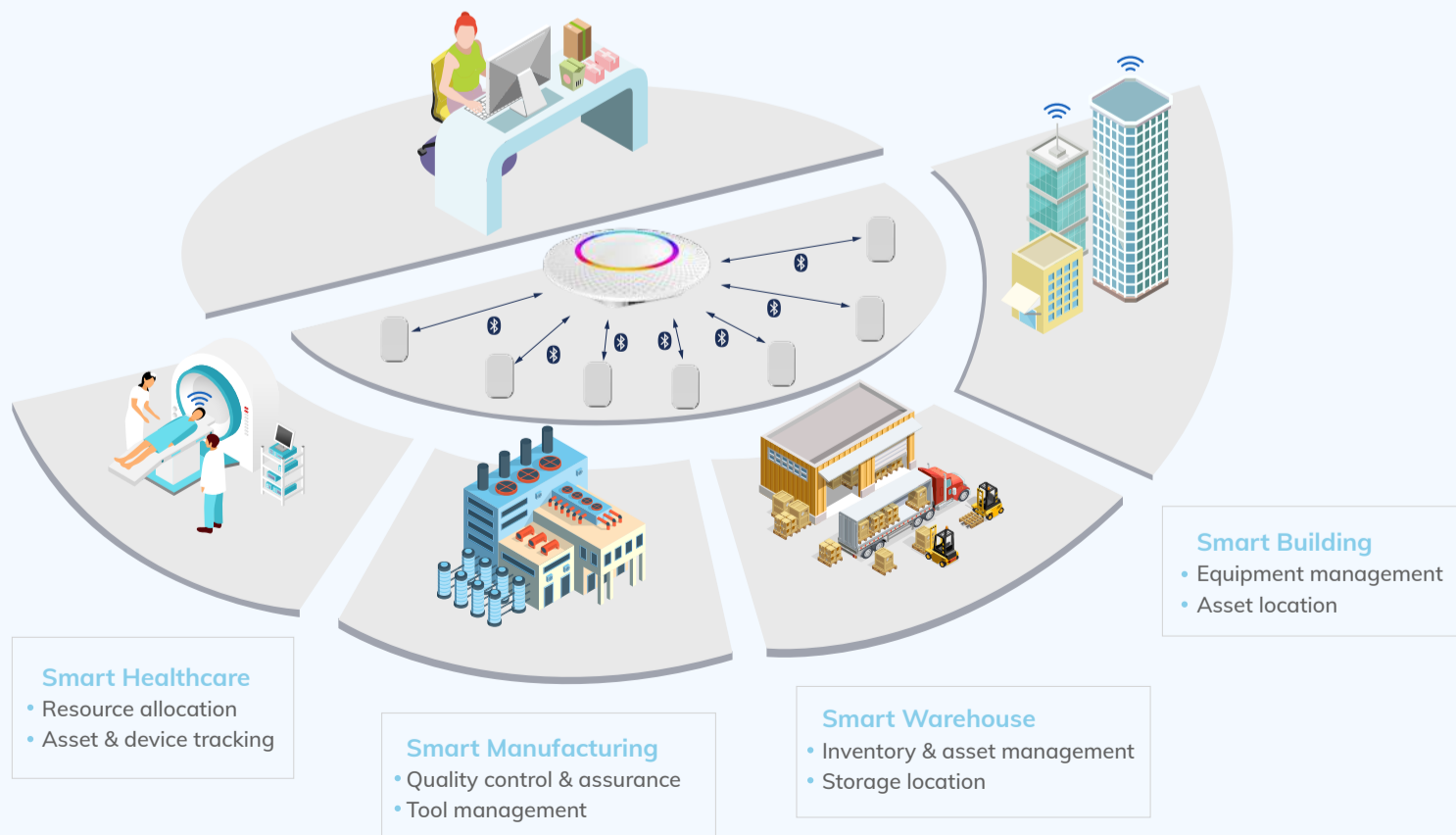


Enterprise-level encryption



Easy deployment and integration

## SOLUTIONS ▶



### Smart Healthcare

- Resource allocation
- Asset & device tracking

### Smart Manufacturing

- Quality control & assurance
- Tool management

### Smart Warehouse

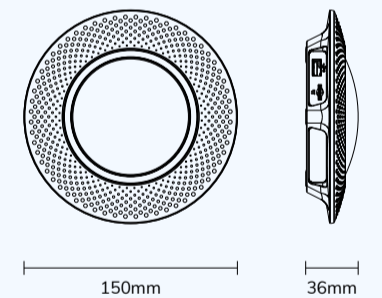
- Inventory & asset management
- Storage location

### Smart Building

- Equipment management
- Asset location

## G1 IoT Gateway (Connection Ver.) Parameters

Model:	G1
Material:	ABS
Color:	White
Weight:	155g
Power supply:	DC 5V/1A, 802.3af PoE
Network connection:	WiFi/Ethernet
Working temperature:	-10~50°C
Firmware update:	OTA, USB, FILE, LAN
Scan coverage:	About 300 m of covered radius (open area)



## MBT02 Parameters

Weight:	17 g
Body material:	ABS
Color:	White (customizable)
Bluetooth version:	Bluetooth® LE 5.0
Chip:	nRF52 series
Battery:	CR series battery, 500 mAh
Sensor:	Accelerometer
OTA:	Supported
Demonstration platform:	MineW Control Platform
Application:	nRF Connect
Broadcast range:	Up to 150 m / 492 ft (open area)
Operating temperature:	-20°C ~ 60°C

