



E5 Location Beacon

E5 Location Beacon, with the BLE 5.0 Technology and stable RSSI signal, is an ideal positioning tag widely deployed in industrial scenarios such as inventory tracking, indoor navigation, and retail promotion. It has a rotatable mechanical design of the housing, making the battery replacement easy and quick.



AVAILABLE NOW

FEATURES



Bluetooth® 5.0 chipset nRF52 series



Advertise iBeacon & Eddystone simultaneously



Replaceable battery 2400mAh



The max. 120 meters advertising distance



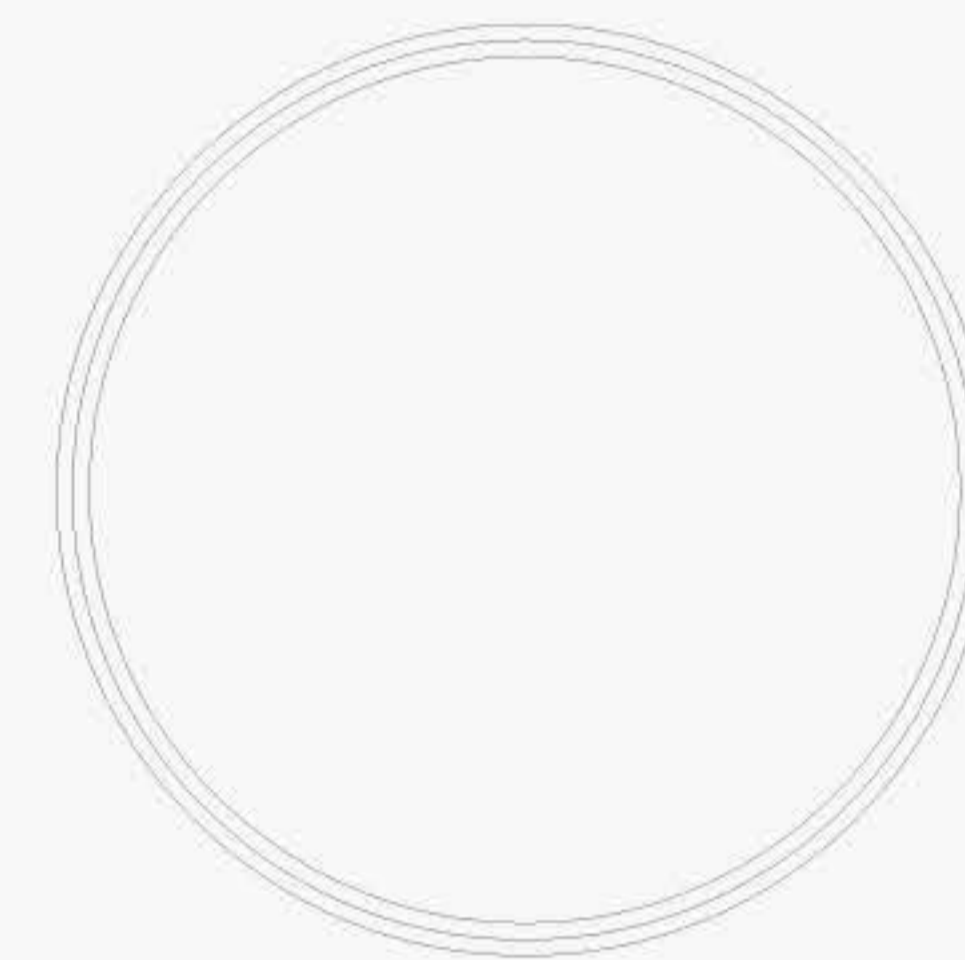
Internal power ON/OFF push button



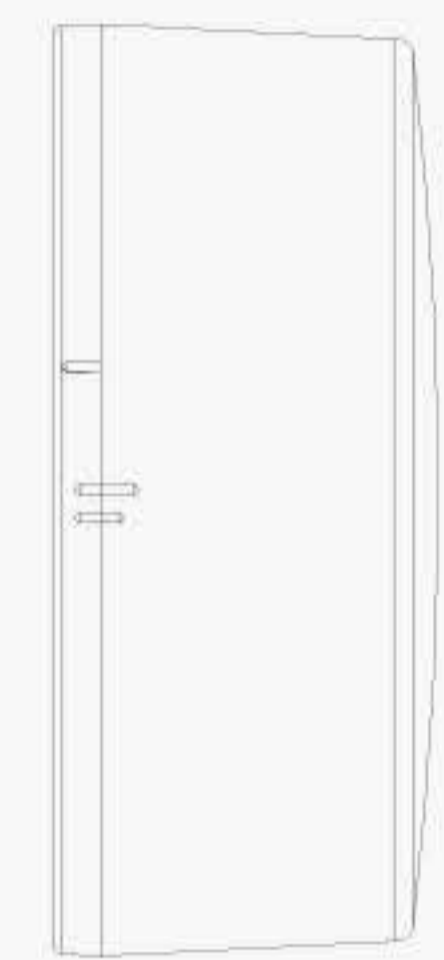
Operation temperature -30 to 60°C

BASIC PARAMETERS

Size:	50x20.5mm
Weight:	39.0g(Battery included)
Materials:	PC
Bluetooth protocol:	BLE 5.0
Chip:	nRF52 series
Battery:	Lithium battery, 2400mAh
Broadcasting range:	120m



50mm

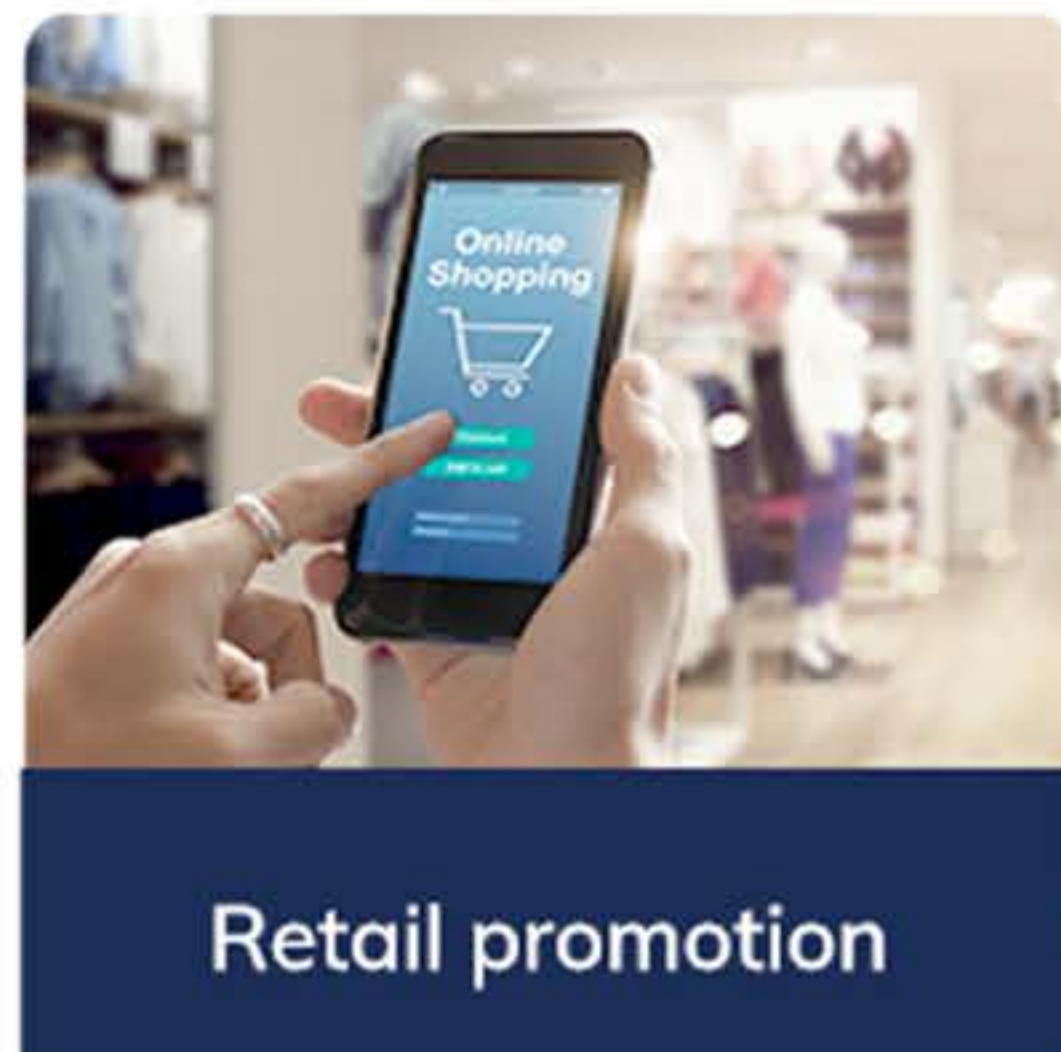


20.5mm

TYPICAL USE CASES



Indoor positioning



Retail promotion

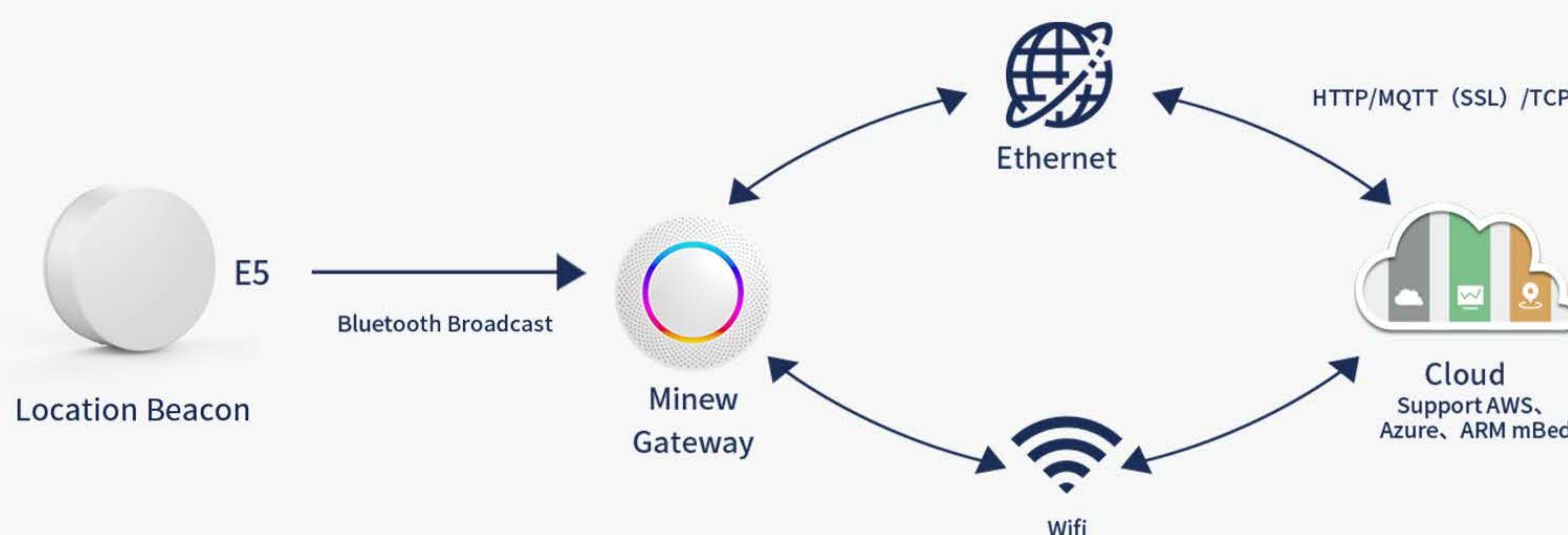


Activity monitoring



Inventory tracking

HOW IT WORKS



- 1 E5 is installed on the targeted assets or other objects
- 2 The signal broadcast by E5 is transmitted to Bluetooth signal receivers
- 3 The received data is sent to the Cloud for real-time monitoring and emergency processing

MINEW PROVIDES



Free Beacon Configuring APP in Google Play & APP Store(BeaconSET+)



Firmware, APP, Cloud SDK is available



Pre-configure UUID, Major, Minor and etc before the shipment



Software, Hardware, Mold, Package can be customized



Global Service and Technical Support